

mh.DESIGN





< Click to view our feature in  
Home Beautiful Magazine



< Click to view our feature in  
Ch 9 Australia's Best House

[Click Here To View Our Introduction Video](#)

## ABOUT US

### WHY CHOOSE JMH DESIGN?

JMH Design has been making our clients' dreams come true since it was founded in 2012.

We are now a highly regarded, multi-disciplinary team that embodies design excellence in every aspect of our work. We are known for our original and innovative designs.

From the initial consultation to the completion of your beautiful new or newly renovated home, we will be by your side and here to help in every way. Our team will take you on a journey that ensures your new home exceeds your expectations.

JMH Design offers award-winning, turnkey home design solutions. We will guide you on the journey from your initial thoughts to the completion of your new home or renovation. We have over a decade of expertise in the industry and we're always up to date on the latest building regulations, codes, and laws. We are a fully licensed low-rise building design company with the QBCC (Queensland Building & Construction Commission).

Our design process is intuitive and transparent. We collaborate with you and our third party partners to ensure your finished plan meets the JMH Design high standards of excellence. We will bring concepts to life and pave the way to your dream home.

We maintain the highest level of professionalism when working on your design, and we ensure your dream is treated with the utmost respect. We understand how important a home is to our clients, which is why JMH designs houses you will love coming home too.

We are visionaries in our field. We have the unique ability to turn your ideas and thoughts into comprehensive, professional plans that cater for your needs. We always aim to exceed the expectations of our clients and we have yet to fail at this mission.

If you're a homeowner wanting to build your perfect home or renovate your current home, we can intuit your ideas and bring them to life.

Let us create the perfect design for your dream home.

Seen in  
Australia's Best House



HIA Award  
Winner



Featured in  
Home Beautiful



Featured on  
RealEstate.com



**jmh.**  
DESIGN

## OUR CORE VALUES

### WHY CHOOSE JMH DESIGN?

#### WE ARE LEADERS

JMH Design are leaders in innovative and contemporary design that fit your needs and elevate your vision. We believe in achieving your dreams, while utilising our expertise to ensure every little detail is perfect. Your home is as important to us as it is to you.

#### WE ARE INNOVATORS

We don't believe in "impossible". At JMH Design, we use innovative solutions to bring your vision from paper to reality. With the use of the most advanced technology, we offer realistic renders, life-size walkthroughs, and computer generated fly-throughs that will allow you to visualise your completed home.

#### WE ARE COLLABORATORS

JMH Design is with you throughout the design process. We collaborate with all third parties such as, builders, structural engineers, town planners, certifiers, and more to ensure the process is streamlined and hassle free.

We have a valued network of partners that we know and trust. You will not be disappointed working with our preferred partners during this journey.

JMH and its extended team are always here to assist.

## TESTIMONIALS

### WHY CHOOSE JMH DESIGN?



*"JMH are so easy to work with and their communication and design process is incredibly efficient."*



*"JMH were fantastic in understanding our needs, budget and style required. We absolutely love our home extension thanks to this team and their plans."*



*"Great communication and produced plans for us that were exactly what we were after!"*



## PROJECT BRISBANE

Escape to a haven of comfort and style with this meticulously restored workers' cottage turned modern retreat. This home offers a seamless fusion of heritage charm and contemporary elegance.

[Click Here To View A Video Of This Project](#)



[Click Here To View  
Home Beautiful  
Magazine Article](#)

Seen in  
Australia's Best House



HIA Award  
Winner



Featured in  
Home Beautiful



Featured on  
RealEstate.com



---

## PROJECT HULME

This modern coastal home combines timeless elegance with relaxed living.

Clean lines, coastal stone, and an open-plan design highlight spaciousness, with high ceilings and seamless indoor-outdoor flow.

Crafted with high-end finishes, it offers luxury and comfort for a family that loves to entertain.





---

## PROJECT EAST

Immerse yourself in the epitome of luxury living with this exquisite

Hamptons-style home. Entertain with ease in the open-plan layout, boasting high ceilings, a media room, and spacious voids that create an inviting atmosphere.

[Click Here To View A Video Of This Project](#)

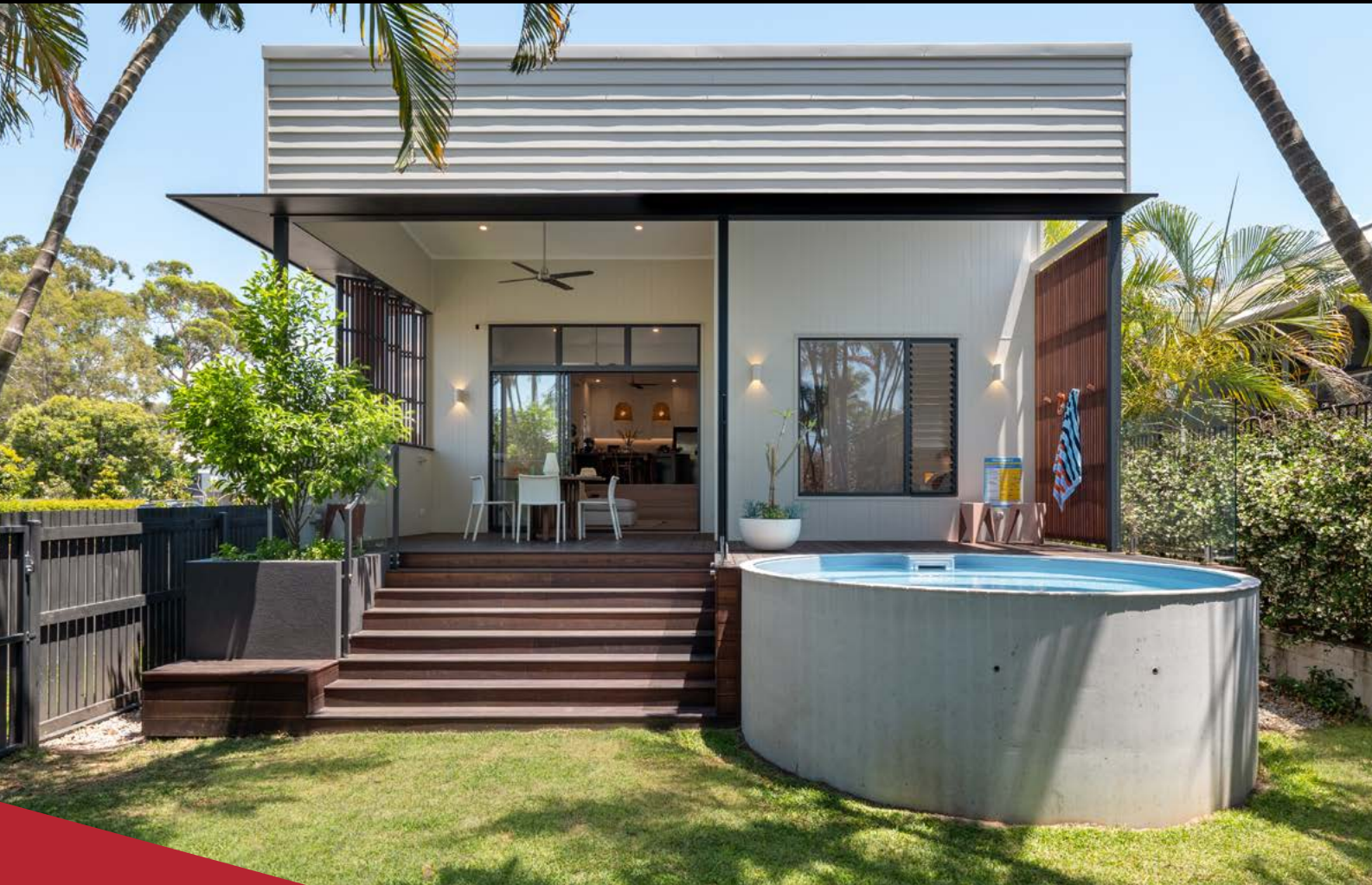




---

## PROJECT BEATHAM

Step into a harmonious blend of old charm and contemporary sophistication with this stunning post-war home. Seamlessly marrying tradition with modernity, the existing house retains its timeless character while boasting a sleek pod extension.





## PROJECT QUANDONG

Step into the past and journey into the future with this remarkable renovation project. Nestled within the timeless charm of its original red brick façade, this home promises to preserve its historic allure while embracing the innovations of the 21st century.

[Click Here To View A Video Of This Project](#)





## PROJECT WILGA

Perched atop a picturesque hill, this modern home offers elegant living with breathtaking views. Featuring an elevated pool, raked ceilings, and an open-plan design, this private residence is perfect for those seeking spacious, luxurious living. Situated on a large acreage-sized block, it's a tranquil oasis away from the bustle of the world.

[Click Here To View A Video Of This Project](#)





---

## PROJECT LUMINA

This is an example of a 3D render we can produce to help our clients visualise the final project. JMH use the highest quality and most up-to-date technologies to bring our innovative building designs to life. This project is to be completed late 2024.

[Click Here To View A Video Of This Project](#)





---

## PROJECT CYROS

This is an example of a 3D render we can produce to help our clients visualise

the final project. JMH use the highest quality and most up-to-date technologies to bring our innovative building designs to life. This project is set to commence soon.

[Click Here To View A Video Of This Project](#)





## JACOB HIPWOOD

### DIRECTOR AND DESIGNER

Jacob's professional journey is characterised by his exceptional qualities and achievements. His career has been punctuated by numerous awards, reflecting the high quality of his work and the innovation he brings to his designs.

Driven by his passion for architecture, and innovation within the field, Jacob founded JM Design in 2012. Since its inception, Jacob has nurtured relationships with industry partners and has grown a network of trusted providers.

JM Design has, under Jacob's guidance, become a highly regarded building design company, enhanced by a team of highly skilled designers, experienced in residential design.

He values teamwork and has a strong affinity for the JM Design brand and core values: Collaboration, Innovation, and Leadership. Being a family man himself, he understands how to design homes for growing or established families.

Jacob has over a decade of experience in both building and design, he possesses a valuable combination of qualifications and a unique perspective that sets him apart as a registered builder and building designer. This uniquely qualifies him to understand the technical aspects of construction.





## SHANE ROGERSON

### SENIOR DESIGNER

Shane's passion for building design started at a young age. Some of his earliest memories are of going to work with his dad, a builder and drafter, and being fascinated by the design and building process.

Shane studied a Bachelor of Design (Landscape Architecture) at Queensland University of Technology and shortly afterward, built his own home. In doing so, Shane decided to study a Diploma in Building Design.

Shane has also had extensive experience using home design software, making him an expert in creating realistic plans to help customers visualise their new homes.

Shane is the longest standing member of the JMH team and an integral part of our success to date. He is an award winning designer with designs that have been showcased in Home Beautiful magazine, Channel 9's "Australia's Best House" and an award winner for renovations over a million dollars.

He loves building homes that are perfectly suited to the Queensland climate and are ideal for families. His family background in building, means he has a strong understanding of the intricacies of all that goes into building.



## ASHLEA CARVEL

### SENIOR DESIGNER

Ashlea Carvel is our most experienced Senior Building Designer with over sixteen years in the industry. She is qualified in Building Design and Technology.

Ashlea has been recognised in the industry for her modern, innovative, and creative designs for new homes and renovations. There is no design challenge that Ashlea has not solved. She enjoys working with clients to help create their dream homes in a beautiful and functional manner.

Ashlea is a core asset to the JMH structure. She is our design extraordinaire. A lot of her work behind the scenes goes unnoticed, despite it being essential to our success. She is a collaborative team player who assists with all areas of the JMH trusted journey. Ashlea is the JMH Design team rock, a real team asset. You can trust the process when working with her.



## **BEN BAILEY**

### **BUILDING DESIGN CONSULTANT**

Ben fell in love with building design in his youth. Playing with Lego sparked a passion that he would later pursue in his education.

After further developing his passion for design, Ben studied a Dual Diploma of Building Design and Interior Design. Fascinated by 3D modelling, architectural software, and design, his natural curiosity pushed him to combine these interests. In doing so, he found himself a part of the JMH Design team.



## **TIM WINDOW**

### **JUNIOR ARCHITECT**

A future in architecture and building design was always something Tim dreamed of (and with the last name Window, it seemed fitting).

Design was a childhood passion of his, from playing with Lego and Meccano as a child, through to art in high school. The ability to create something meaningful really appeals to him and has long been a condition for his deciding on a career.



## **HAZEL**

### **ADMIN SUPPORT**

Hazel is our super Admin Support, who's been with JMH Design for 4 years and counting.

Hazel is our behind-the-scenes office ninja. Although you may not hear from Hazel too often on the phone, you will find yourself receiving regular, friendly communications from her. Hazel is our reporting, process driven technology extraordinaire.

Without Hazel, JMH Design would not be where it is today.

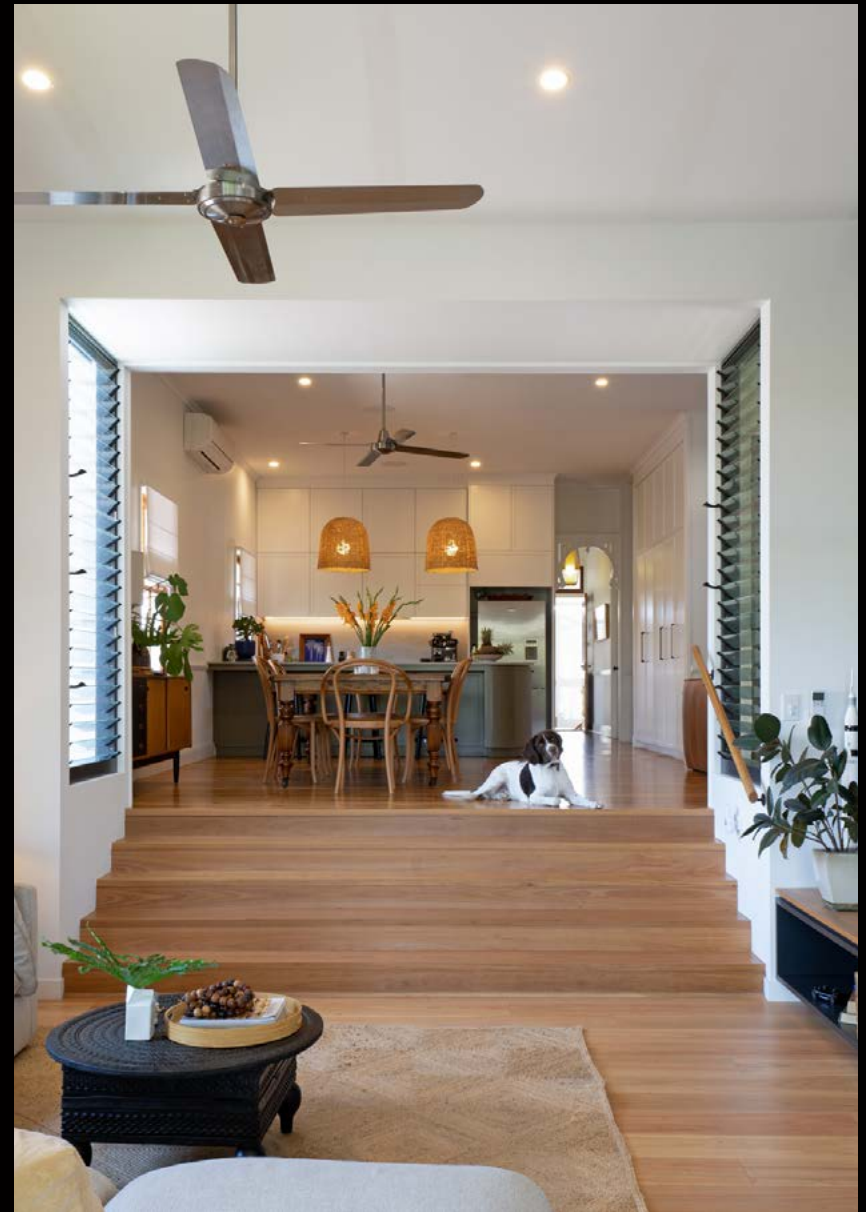


---

## PROJECT BEATHAM

DESIGNER: JACOB HIPWOOD

Step into a harmonious blend of old charm and contemporary sophistication with this stunning post-war home in Brisbane's sought-after north. Seamlessly marrying tradition with modernity, the existing house retains its timeless character while boasting a sleek pod extension. Inside, discover high ceilings and a renovated kitchen, perfectly complementing the open-plan living space that flows effortlessly into a small yet enchanting backyard. The pièce de résistance? An elevated round pool that adds a touch of luxury to the outdoor oasis. This exceptional property is a testament to the transformative power of thoughtful design, proving that with creativity and vision, you can enhance a home's character while embracing the future.



---

## PROJECT EAST

DESIGNER: JACOB HIPWOOD

Immerse yourself in the epitome of luxury living with this exquisite Hamptons-style home nestled in the sought-after enclave of Kedron. Entertain with ease in the open-plan layout, boasting high ceilings, a media room, and spacious voids that create an inviting atmosphere. The grandeur continues as you're welcomed by beautiful Hamptons-style stairs upon entering through the curved front door. Outside, a tranquil oasis awaits with an elevated pool encircled by a sunken fire pit, perfect for hosting memorable gatherings. Retreat to the master bedroom featuring an open-plan design, complete with a lavish bath and his and her robes. Enjoy culinary delights in the Hamptons-style kitchen adorned with coffered ceilings, a captivating feature fireplace, while guests luxuriate in their own private haven with a guest bedroom and ensuite. Experience the height of sophistication and comfort in this remarkable residence designed for refined living.





## PROJECT BRISBANE

### DESIGNER: SHANE ROGERSON

Escape to a haven of comfort and style in the heart of Bulimba with this meticulously restored workers' cottage turned modern retreat. Nestled in Brisbane's sought-after locale, this home offers a seamless fusion of heritage charm and contemporary elegance. Step inside to discover an open-plan living space, perfect for entertaining guests or unwinding in comfort. The expansive kitchen is a chef's delight, while the luxurious master bedroom and ensuite provide a serene sanctuary. Outside, a sprawling alfresco area overlooks a meticulously manicured lawn and a restored pool, creating an entertainer's oasis for gatherings or moments of relaxation. Experience the epitome of modern living with a timeless appeal in this exquisite Brisbane abode. Welcome home.

Featured in  
Home Beautiful



HIA Award  
Winner



Featured on  
RealEstate.com



**AUSTRALIA'S  
BEST HOUSE**

PRESENTED BY MEGAN SALE



*Click to view our feature  
in Ch 9 Show  
Australia's Best House*





---

## PROJECT QUANDONG

DESIGNER: SHANE ROGERSON

Step into the past and journey into the future with this remarkable renovation project. Nestled within the timeless charm of its original red brick façade, this home promises to preserve its historic allure while embracing the innovations of the 21st century.

The vision for this renovation is clear: to seamlessly blend the classic with the contemporary. At the heart of the transformation lies a modern rear extension, boasting sleek cladding and striking curved walls that herald a new era of building design elegance.

Inside, the open-plan design beckons, with an expansive kitchen serving as the focal point, seamlessly connecting living and entertaining areas. Natural light floods the space, creating an inviting atmosphere for gatherings and relaxation.





---

## PROJECT SCOTT

DESIGNER: ASHLEA CARVEL

From dilapidated to dazzling, witness the stunning metamorphosis of an old, run-down worker's cottage into a captivating contemporary family haven. Once a relic of the past, this transformed abode boasts a spacious open-plan kitchen and entertaining area, complete with a luxurious pool and expansive rooms. Bathed in natural light with soaring ceilings and adorned with high-end finishes, this home caters to every age group, inviting families and admirers of exquisite living to bask in its allure.



---

## PROJECT GORDON

DESIGNER: ASHLEA CARVEL

Transforming a Post-War Gem into a Modern Family Haven

In the heart of Brisbane's upscale suburb of Hendra, a charming post-war home underwent a remarkable transformation. Our clients, seeking a sanctuary for their growing family, entrusted us with the task of preserving the home's character while ushering it into the 21st century.

With a blend of nostalgia and innovation, we meticulously crafted a space where tradition meets luxury. High-end features, spacious rooms for the kids to flourish, and a lavish parents' retreat were seamlessly integrated, all while navigating strict building restrictions to honor the home's heritage.

The result? A timeless yet contemporary abode that our clients adore returning to—a testament to the power of thoughtful design and collaboration. It was a joy to bring their vision to life, and we're grateful for the opportunity to have played a part in creating their dream home.



PHOTORAPHY THANKS TO PLACE ASCOT PHOTOS @PATRICK\_MCKINNON\_@PLACE\_ASCOT



# WHAT'S THE DIFFERENCE?

## DRAFTSMAN, DESIGNER OR ARCHITECT?

### DRAFTSMAN

A draftsman specialises in creating technical drawings for various structures and additions, including carports and decks. Their drawings serve as detailed guides for builders and contractors.

### DESIGNER

Designers aim to understand clients' desires and translate them into designs that can be built, collaborating with clients and builders. They enjoy creating projects that align with the client's brief and desired financial outcomes. Designers also stay updated with the latest trends and technologies to incorporate innovative and sustainable solutions into their designs.

### ARCHITECT

Architects are known to prefer to take on the role of project manager. Many of their projects are valued at over \$2 million. Additionally, architects are recognised for their unique and distinct architectural styles, which they incorporate into their designs, rather than designing to a client's vision.

## WHEN TO ENGAGE US?

### WHY CHOOSE JMH DESIGN?

We recommend engaging us as soon as possible.

When you engage a builder, JMH collaborates closely with them to ensure that your budget is adhered to and that the project can be successfully constructed.

On average, the design process can take 6 to 12 months for a project with a budget ranging from \$300,000 to \$600,000, and 12 to 18 months for homes valued between \$600,000 and \$1 million plus.

## WHO WE WORK WITH

### COLLABORATION IS KEY

We work with many different stakeholders to ensure your project outcome aligns with your initial vision.

- ✓ BUILDERS
- ✓ CERTIFIERS
- ✓ ENGINEERS
- ✓ TOWN PLANNERS
- ✓ SURVEYORS
- ✓ HYDRAULIC ENGINEERS
- ✓ HERITAGE ARCHITECTS
- ✓ INTERIOR DESIGNERS
- ✓ LIFESIZE PLANS BRISBANE

*We collaborate with many different stakeholders to make your experience as smooth as possible.*

#### Stage One

*Your journey begins when you have an idea of what you'd like to achieve and a budget declared.*

#### Stage Two

*Research and start discussions with a builder and JMH. JMH can provide a referral to a builder if you don't have one in mind.*

#### Stage Three

*Let's get started! Your design journey can take anywhere from 6 to 18 months, depending on the size of the project.*

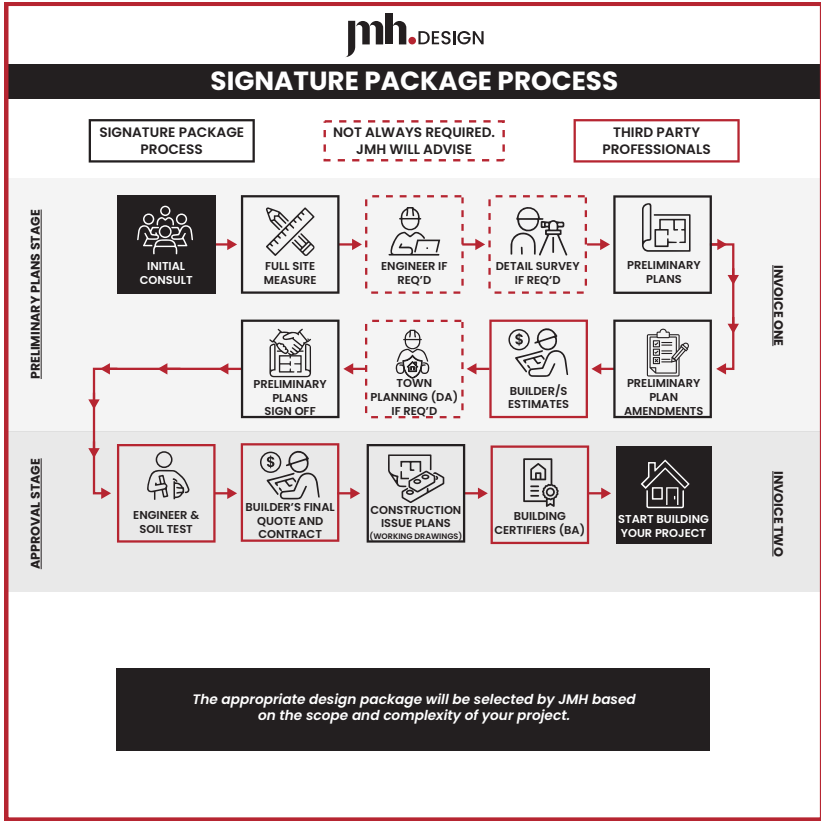
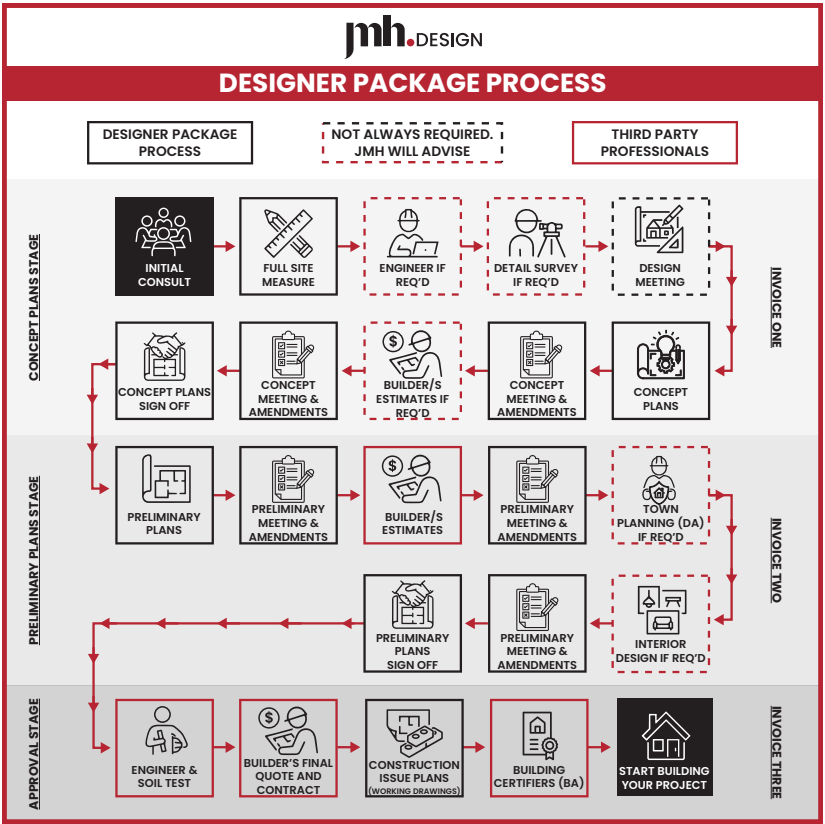


# JMH DESIGN PROCESS

## Designer Package

This is the ideal JMH package for more involved projects, such as new homes, raise-and-build-unders, and extensions, where detail, creativity, and tailored guidance are essential.

Designed to provide a thorough and collaborative experience, this premium service includes comprehensive design support, ongoing meetings, multiple concept explorations, and refined revisions. It's a high-level process that allows our experienced team to unlock the full potential of your home through inspired, intelligent design.



## Signature Package

Ideal for smaller projects with a straightforward scope, this package is designed for speed and simplicity. It follows a fast-tracked process with no meetings or concept stages, and only minimal revisions included. Best suited to projects with an estimated construction value under \$150,000. It offers a cost-effective solution while still delivering the quality and detail expected from the JMH team.

Please note: While this is a streamlined service, it is not a basic drafting package. This is a professional design process tailored for smaller projects. JMH Design is a building design company—not a drafting service—and our work reflects the same level of care, expertise, and attention to detail, regardless of project size.



**jmh**.DESIGN

7 /115 ROBINSON RD, GEEBUNG, QLD 4034

P 07 3193 8889  
E [support@jmhdesigns.com.au](mailto:support@jmhdesigns.com.au)  
[www.jmhdesigns.com.au](http://www.jmhdesigns.com.au)

**Linktree\***  
/JMHDESIGNS

ACN: 612 826 196, QBCC: 1257212